



## USER INTERFACE

- » 2 interfaces available: mainframe control panel and iox2 software (via USB connection to a PC).
- » From either interface, you can adjust tissue tension, fill/empty/wash bath, launch a cleaning operation and renewed solution by overflow-suction, so tissue is never exposed to air.

## POWERFUL SOFTWARE FEATURES

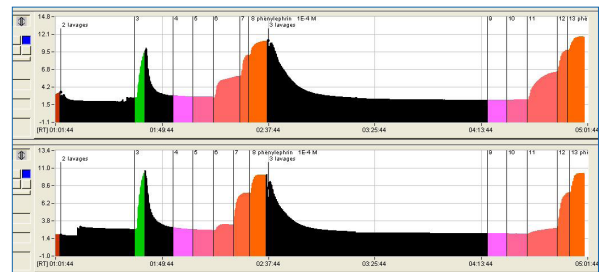
iox2 software manages data acquisition from up to 4 emkaBATH4 mainframes (16 bath):

- » Automatic tissue tension adjustment
- » Full data display as graphs, tables, trends
- » Beat to beat calculation on fast beating tissues (papillary/atrial muscles)
- » Detailed calculation on slow contracting tissue (uterus, ileum)
- » On-the-fly comment and mark addition
- » Preprogrammed action triggered by function key or timers
- » Automated control of stimulators, valves, motors protocols

datanalyst software offers a powerful post-processing, with data extraction, group averaging, ED50...

All our software are 21 cfr part 11 compliant: Online data validation, audit trail & secured user access management.

Alternatively, you may use your existing software for acquisition (calibrated BNC analog outputs available).



## SPECIFICATIONS

emkaBATH4 mainframe	
Dimension	641x500x345 mm
Weight	18.5 kg
Power supply	115-230 V
Positionner resolution	2.5 $\mu$ m (0.5mm/rotation; 200 steps/rotation)
Calibration range	0-1/ 0-10 / 0-50g
Analog output	0-5 V
Bubbling	frit glass
Initialization time	180 s
Bath temp. sensor resolution	0.1°C (0.18 °F)
Bath temp. target range	20.0-39.0°C (68-102.2°F)

Transducers	it30	it1	itMYO
Range	0 to 30 g	0 to 25 g	0 to 30 g
Sensitivity @Vcc=5V	0.1 mV/g	>0.8m V/g/V	1.67 mV/g