



IMPLANTABLE TELEMETRY FOR SMALL ANIMALS

Continuous, real-time physiological data from conscious freely moving rats & mice

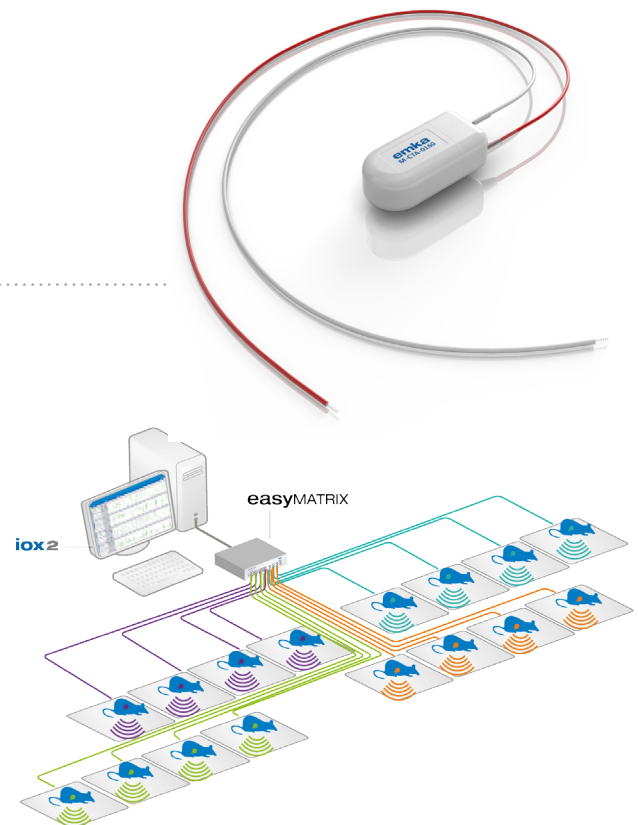
RECORDED SIGNALS

- » Biopotentials (ECG, EEG)
- » Temperature
- » Acceleration



EASY, ROBUST, COST-EFFECTIVE INFRASTRUCTURE

- » easyTEL implant is surgically implanted in the animal
- » easyTEL RECEIVER collects signals from the implant
- » easyTEL RECEIVER is placed under the animal plastic cage (typically 42x42x18cm for rats & 33x33x14cm for mice)
- » easyMATRIX connects via USB to the computer running iox2 acquisition software
- » Implants price very competitive
- » Implant can be re-implanted as long as battery lasts
- » No refurbishment and no associated costs or delays



KEY FEATURES

- » easyTEL-M size ideal for rats (recommended min weight: 100g)
- » easyTEL-S size ideal for mice (recommended min weight: 20g)
- » After implantation, use a magnet to turn implant on or off
- » Designed to accommodate intraperitoneal placement
- » Up to 8 months of continuous transmission
- » Ability to acquire analog signals, synchronized with implants
- » easyTEL implant compatible with DSI™ hardware & Ponemah software

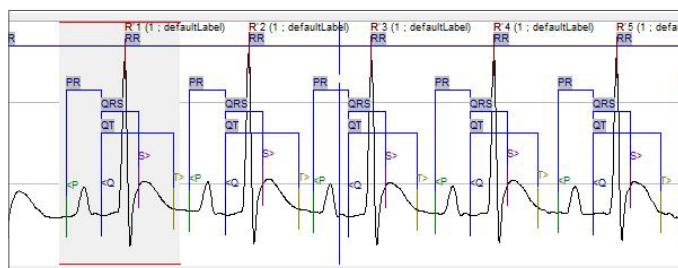




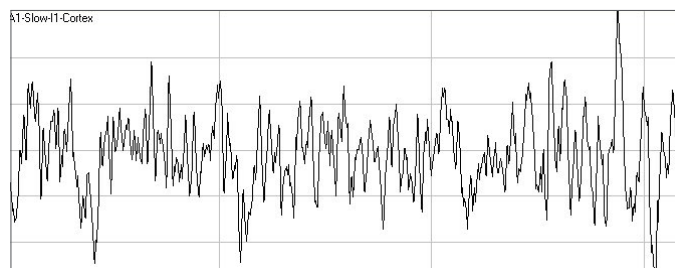
ACQUISITION & ANALYSIS WITH IOX2 SOFTWARE

easyTEL exclusively runs with emka iox2 recording and analysis software:

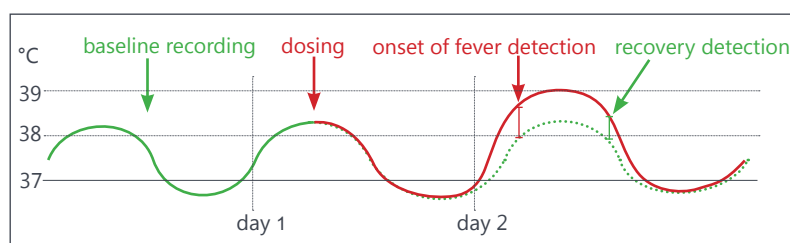
- » Signal acquisition and real-time analysis
- » Synchronized video
- » Preprogrammed actions triggered by function keys, protocols or timers
- » Alarms generated when selected parameters cross preset thresholds (flashing display, sound or e-mails)
- » Automated detection of onset of fever



ECG from rat analyzed in ecgAUTO software



EEG (hippocampus) from rat acquired in iox2 software



Onset of fever detection - measuring principle

IMPLANT SPECIFICATIONS

easyTEL-S	Models	Biopotential (ECG, EEG, EMG)		Temperature	Activity	Battery life	Dimensions	Weight
For animals>20g	ETA	1		1	1	3 months	1.8 cc	3.3 g
	TA			1	1	3 months	1.8 cc	3.3 g
easyTEL-M	Models	ECG	EEG	Temperature	Activity	Battery life	Dimensions	Weight
For animals>100g	CTA	1		1	1	8 months	5.4 cc	8 g
	ETA		1	1	1			
	TA			1	1			

For more information on other possible signal combinations, please contact our team of specialists.